

Basic Troubleshooting

*LED not displayed

Check the power source is correct voltage (AC220V) and correct polarity.

*Display appears scrambled

Check that all connections are correct and tight.
Check that there is no harsh interference nearby.

*Display 1 or -1

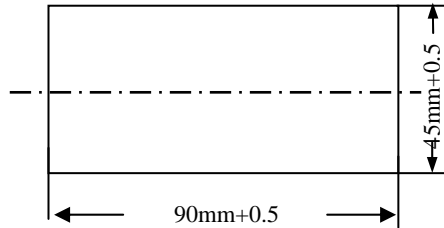
Please confirm signal input is a loop when it is voltmeter;
Please confirm inputting signal is not more than its measuring range.

*A/D chip maybe murdered

Reading data isn't Zero when shorting voltmeter signal inputting terminals.
Reading data isn't Zero when ammeter signal inputting is off.

MANUAL

Panel Cutout:



XIELI

ISO9001-2008 & CE

Shaanxi XIELI Photo Electric Instrument Co., Ltd

Add: No.2 Xinke Rd, Eastern Development Zone,

Xi'an 710043, Shaanxi, CHINA

Tel: +86-29-82622375 Fax: +86-29-84023638

Website: www.xieli-china.com

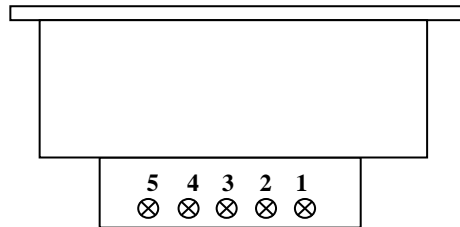
MB3000 Series Digital Panel Meter

Power Source AC220V measure DC/AC voltage, current

OPERATION SPECIFICATIONS:

Power Supply	AC220V±10%
Maximum Count	1999(3 1/2 digit)
Character Height	15mm
LED color	Red
Operating temperature	0°C~60°C
Storage Temperature	-20°C~80°C
Relative humidity	20%~80%
Dimension	W96mm x H48mm x D87mm
Panel Cutout	90mm×45mm
Sample Frequency	400ms
Auto Zero	
Auto Polarity	
Over Range	Display 1 or -1

WIRING DIAGRAM:



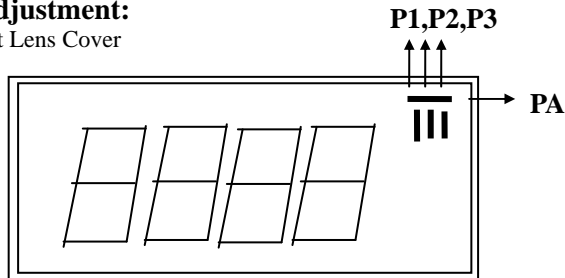
PIN 1, PIN 2: Voltage/current signal input
 PIN 3: Blank
 PIN 4, PIN5: AC220V power source

*Caution

When you turn on the meter, the power source must be turn on before the signal inputting;
 When you turn off the meter, please cutoff the signal inputting firstly.
 Do not disassemble

*Decimal point adjustment:

**First Open Front Lens Cover



When PA soldered with P1, the meter display 1.999
 When PA soldered with P2, the meter display 19.99
 When PA soldered with P3, the meter display 199.9

MB3100Series DC Voltmeter

Model No.	Range	Accuracy	Resolution	Input Resistance
MB3101	±199.9mV	±0.3%+1 digit	100 μ V	100MΩ
MB3102	±1.999V	±0.3%+1 digit	1mV	100MΩ
MB3103	±19.99V	±0.3%+1 digit	10mV	10MΩ
MB3104	±199.9V	±0.3%+1 digit	100mV	10MΩ
MB3105	±500V	±1%+1 digit	1V	10MΩ

MB3200Series DC Ammeter

Model No.	Range	Accuracy	Resolution	Input Resistance
MB3201	±199.9uA	±0.5%+1 digit	100nA	1000Ω
MB3202	±1.999mA	±0.5%+1 digit	1 μ A	100Ω
MB3203	±19.99mA	±0.5%+1 digit	10 μ A	10Ω
MB3204	±199.9mA	±0.5%+1 digit	100 μ A	1Ω
MB3205	±1.999A	±0.6%+1 digit	1mA	0.1Ω
MB3206	±5.00A	±1%+1 digit	10mA	0.01Ω

MB3300Series AC Voltmeter

Model No.	Range	Accuracy	Resolution	Input Resistance	Frequency Range
MB3301	AC199.9mV	±0.5%+3 digit	100 μ V	100MΩ	25Hz-1kHz
MB3302	AC1.999V	±0.5%+3 digit	1mV	100MΩ	25Hz-1kHz
MB3303	AC19.99V	±0.5%+3 digit	10mV	10MΩ	25Hz-1kHz
MB3304	AC199.9V	±0.5%+3 digit	100mV	10MΩ	25Hz-1kHz
MB3305	AC500V	±1%+3 digit	1V	10MΩ	25Hz-1kHz

MB3400Series AC Ammeter

Model No.	Range	Accuracy	Resolution	Input Resistance	Frequency Range
MB3401	AC199.9uA	±0.75%+3 digit	100nA	1000Ω	25Hz-1kHz
MB3402	AC1.999mA	±0.75%+3 digit	1 μ A	100Ω	25Hz-1kHz
MB3403	AC19.99mA	±0.75%+3 digit	10 μ A	10Ω	25Hz-1kHz
MB3404	AC199.9mA	±0.75%+ 3digit	100 μ A	1Ω	25Hz-1kHz
MB3405	AC1.999A	±1%+3 digit	1mA	0.1Ω	25Hz-1kHz
MB3406	AC5.00A	±0.75%+4	10mA	0.01Ω	25Hz-1kHz